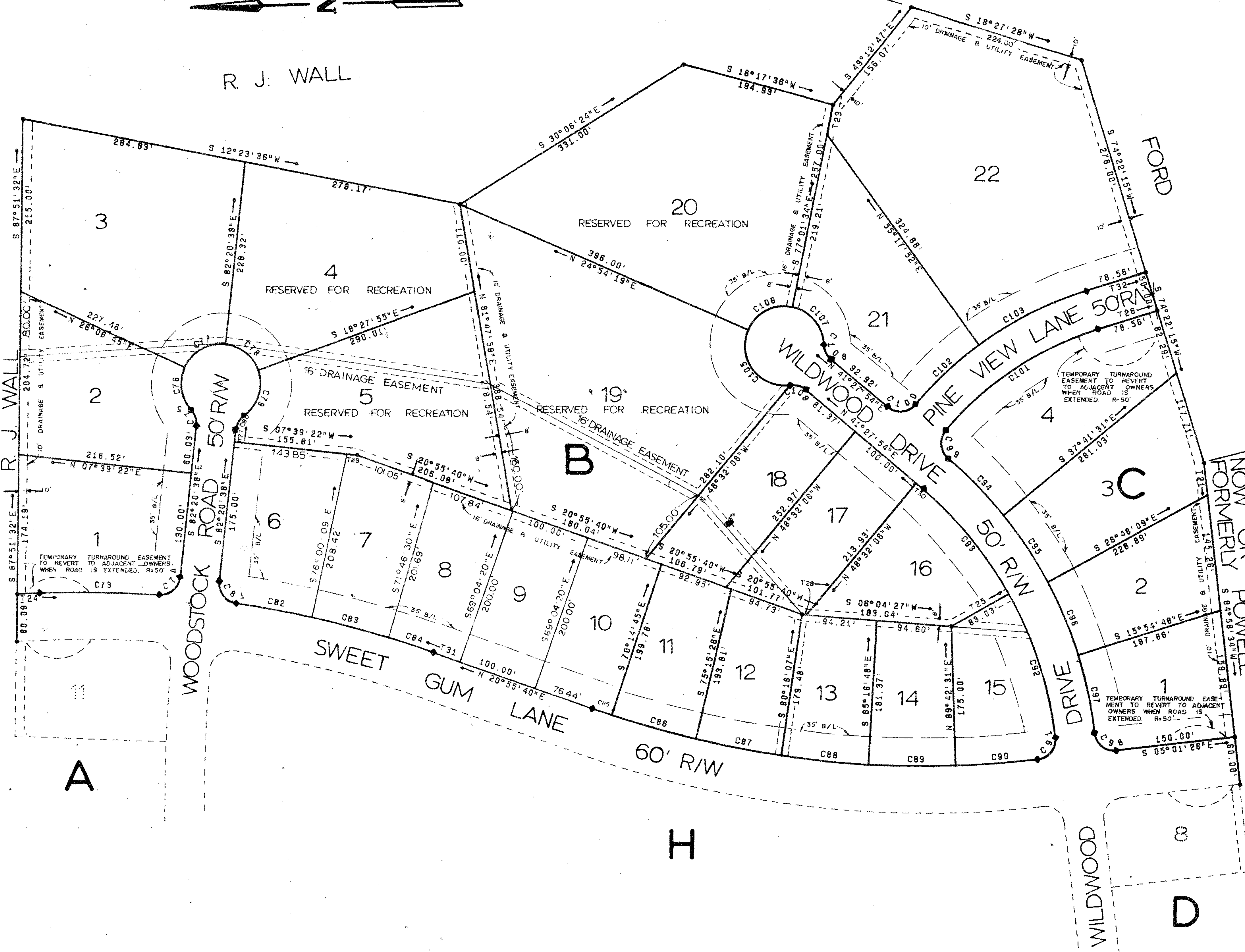




R. J. WALL

FORD



WILDWOOD FARMS
RIVES DISTRICT
PRINCE GEORGE COUNTY, VIRGINIA

SCALE: 1"=100' APRIL 28, 1975

CHARLES C. TOWNES & ASSOCIATES
CIVIL ENGINEERS - PLANNERS - LAND SURVEYORS
COLONIAL HEIGHTS, VIRGINIA