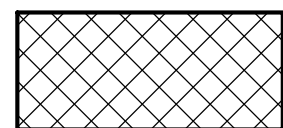
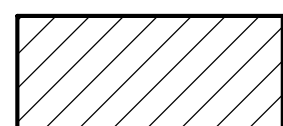


DEMOLITION LEGEND



REMOVE PAVEMENT, GRAVEL AND/OR CONCRETE



CLEAR & GRUB

E&S KEYNOTES:

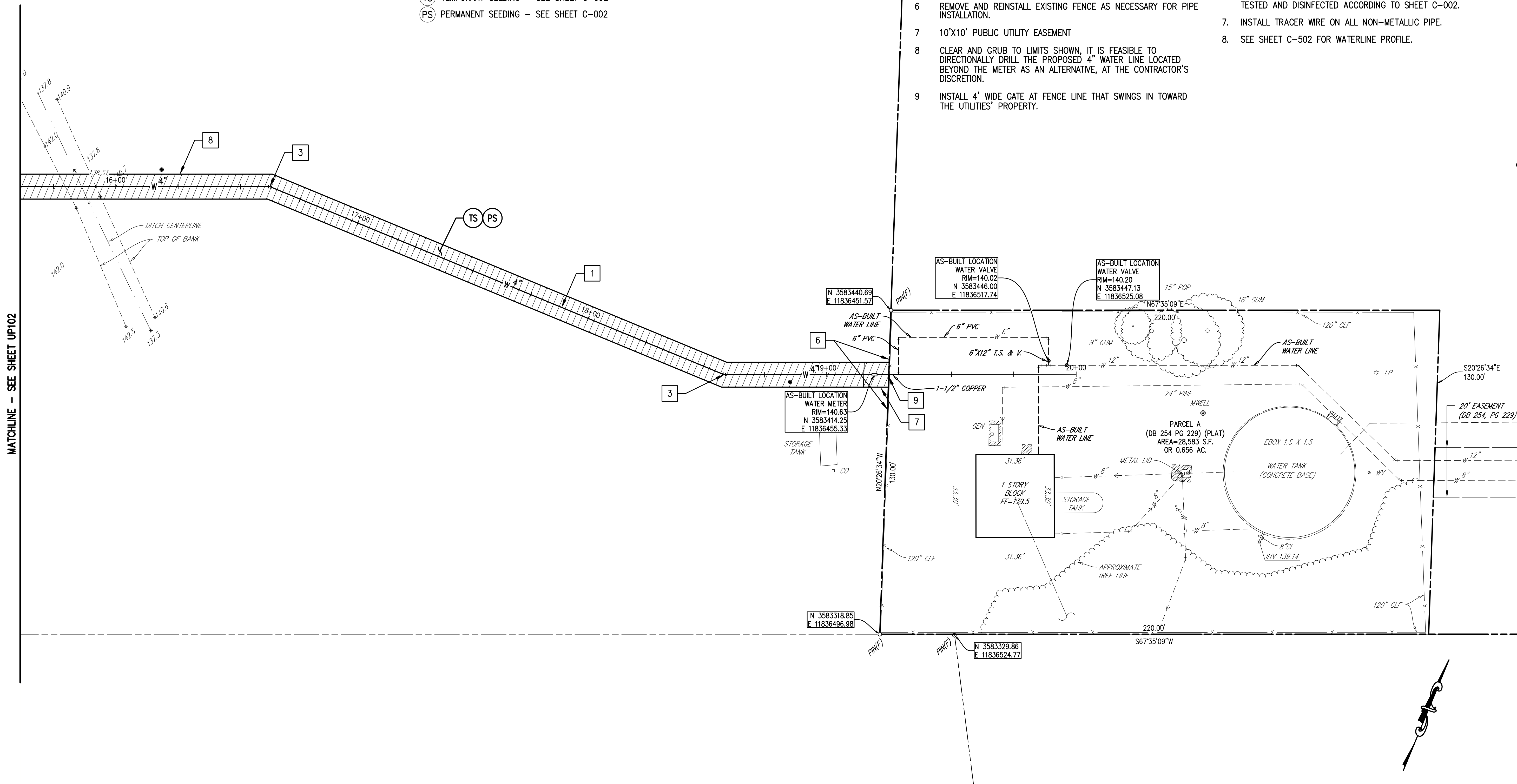
- (TS) TEMPORARY SEEDING - SEE SHEET C-002
- (PS) PERMANENT SEEDING - SEE SHEET C-002

NEW WORK KEYNOTES:

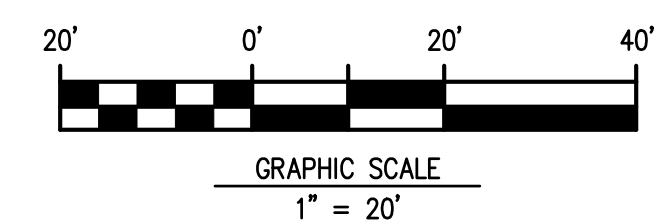
- 1 ±984 LF 4" PVC DOMESTIC WATER LINE, SEE NOTE 5, THIS SHEET.
- 2 12" X 12" TEE AND THREE (3) VALVES (ONE INSERTION). EXISTING 12" MAIN ASSUMED TO BE 12" DUCTILE IRON BASED UPON RECORD DRAWINGS OBTAINED FROM PRINCE GEORGE COUNTY DATED 26 MAY 1982. CONTRACTOR IS RESPONSIBLE FOR UNCOVERING AND VERIFYING EXISTING PIPE LOCATION, SIZE, AND MATERIAL PRIOR TO ACQUIRING TS&V.
- 3 22.5' BEND
- 4 1 1/2" WATER METER & VAULT (SEE DETAIL SHEET C-501)
- 5 12"x4" REDUCER, 10' INSIDE THE PROPERTY LINE
- 6 REMOVE AND REINSTALL EXISTING FENCE AS NECESSARY FOR PIPE INSTALLATION.
- 7 10'X10' PUBLIC UTILITY EASEMENT
- 8 CLEAR AND GRUB TO LIMITS SHOWN, IT IS FEASIBLE TO DIRECTIONALLY DRILL THE PROPOSED 4" WATER LINE LOCATED BEYOND THE METER AS AN ALTERNATIVE, AT THE CONTRACTOR'S DISCRETION.
- 9 INSTALL 4' WIDE GATE AT FENCE LINE THAT SWINGS IN TOWARD THE UTILITIES' PROPERTY.

SHEET NOTES:

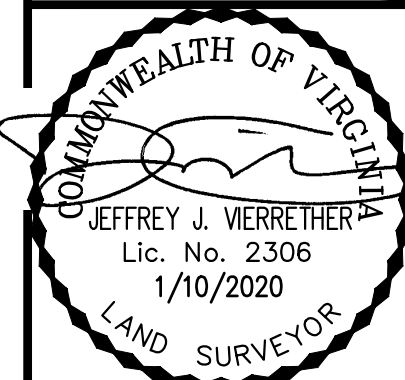
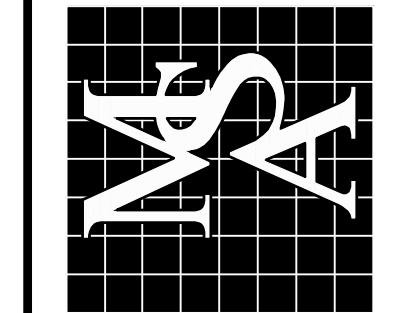
- 1 REFER TO SHEET C-001 FOR LEGEND AND ABBREVIATIONS.
- 2 REFER TO SHEET V-101 FOR SURVEY NOTES.
- 3 THE CONTRACTOR IS RESPONSIBLE FOR LOCATING AND VERIFYING EXISTING UTILITIES. THE CONTRACTOR IS RESPONSIBLE FOR THE RELOCATION OF ANY UTILITIES AND FOR REPAIRING ANY EXISTING UTILITIES THAT ARE DAMAGED DURING CONSTRUCTION, AT HIS OWN EXPENSE.
- 4 REFER TO SHEET C-001 AND C-002 FOR UTILITY NOTES.
- 5 ALL PROPOSED PIPE SHALL BE MINIMUM OF 3.5' BELOW FINISHED GRADE.
- 6 ALL PROPOSED PIPE & APPURTENANCES SHALL BE PRESSURE TESTED AND DISINFECTED ACCORDING TO SHEET C-002.
- 7 INSTALL TRACER WIRE ON ALL NON-METALLIC PIPE.
- 8 SEE SHEET C-502 FOR WATERLINE PROFILE.



MATCHLINE - SEE SHEET UP102



MSA, P.C.
 Environmental Sciences • Planning • Surveying
 Civil & Environmental Engineering • Landscape Architecture
 5032 Rouse Drive, Suite 100
 Virginia Beach, VA 23462-5764
 757-490-9264 | www.msaonline.com



DESIGNED	M/P	M/P/C/S	DRAWN	CHECKED	APPROVED	DATE
						1/10/2020

UTILITY PLAN
 of
OAK SHADES MOBILE HOME PARK
 & PARCEL "A"
 (DB 254, PG 229) (PLAT)
 PRINCE GEORGE COUNTY
 VIRGINIA

SHEET
UP101
 2 of 2 Sheets
 SCALE: 1" = 20'
 PROJ. NO.: 19090