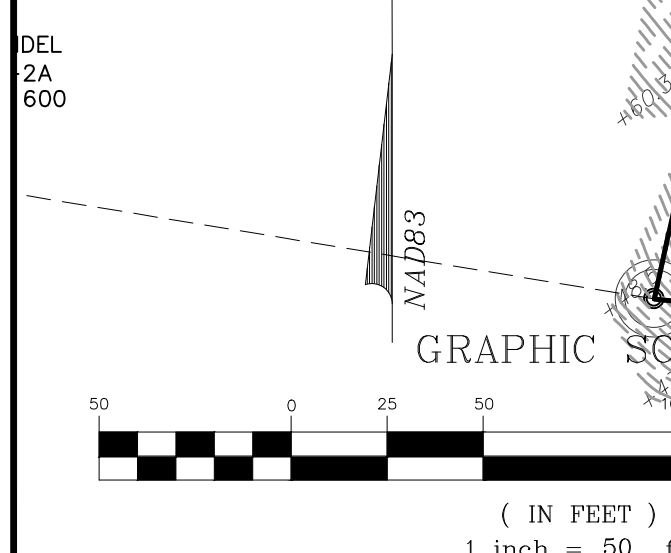


LINE LEGEND
 --- LIMITS OF CRITICAL SLOPES
 *NOTE: CRITICAL SLOPES MAY CONTAIN HIGHLY ERODIBLE SOILS.

N/F TORSTEN E. PETERSON JR. & OTHERS
 T.M. #14-(7)-1
 ZONING: R-1

N/F JAMES L. SPEIDEL
 T.M. #14-(7)-2A
 D.B. 261, PG. 600
 ZONING: R-1

MATCHLINE-SEE SHEET C2.3



- NOTES:**
- FILL SHALL BE INSTALLED IN LIFTS TO ACHIEVE 95% COMPACTION TO A POINT OF 80" IN BOTH DIRECTIONS OF THE ROAD CENTERLINE.
 - R.P.A. IS PRESENT ON THE FOLLOWING LOTS: 37, 38, 72, 73, 74, 75 & 76. THE BALANCE IS R.M.A.
 - ALL LOTS ALONG ROLL FACE CURB, WILL NEED TO HAVE ROLL TOP CURB ENTRANCES INSTALLED AT TIME OF CURB AND GUTTER INSTALLATION. OWNER SHALL DETERMINE LOCATION OF DRIVEWAY ENTRANCES. CONTACT THE DESIGN ENGINEER FOR ENTRANCE DESIGN CLARIFICATIONS, CONSTRUCTION ANOMALIES AND INSTALLATION QUESTIONS.
 - HOUSE FOOTINGS MUST EXTEND INTO THE ORIGINAL EXISTING GROUND DRAINAGE EASEMENTS.
 - STREET LIGHTS SHALL MEET REQUIREMENTS OF FIGURES 14 AND 15 FOUND ON PAGE B-45 OF APPENDIX B - SUBDIVISION STREET DESIGN GUIDE OF THE ROAD DESIGN MANUAL.
 - ALL DRAINAGE EASEMENTS UNLESS OTHERWISE NOTED ARE COUNTY DRAINAGE EASEMENTS.
 - THIS SITE REQUIRES THE RETENTION OF AN UNDISTURBED AND VEGETATED 100-FOOT WIDE BUFFER AREA IN THE RESOURCE PROTECTION AREA.
 - ONLY WATER DEPENDENT FACILITIES OR REDEVELOPMENT IN THE RESOURCE PROTECTION AREA ARE PERMISSIBLE.
 - ALL HYDRANTS SHOULD BE PLACED A MINIMUM OF 2' FROM THE BACK OF CURB.

N/F TORSTEN E. PETERSON JR.
 T.M. #14-(5)-2
 ZONING: R-1

10
 N/F TORSTEN E. PETERSON JR.
 T.M. #14-(5)-2
 ZONING: R-1

UTILITY NOTE: ALL SANITARY MANHOLES ARE TO BE SEALED AT THE JOINTS WITH AN EXTERNAL RUBBER SLEEVE SIMILAR TO THE INFI-SHIELD SEAL WRAP MANUFACTURED BY SEALING SYSTEMS, INC. THE SEAL SHALL BE MADE OF EPDM (ETHYLENE PROPYLENE DIENE MONOMER) RUBBER WITH A MINIMUM THICKNESS OF 65 MILS. EACH UNIT SHALL HAVE A 2-INCH WIDE MASTIC STRIP ON THE TOP AND BOTTOM EDGE OF THE RUBBER WRAP. THE MASTIC SHALL BE NON-HARDENING BUTYL RUBBER SEALANT, WITH A MINIMUM THICKNESS OF 125 MILS. THE SEAL SHALL BE DESIGNED TO PREVENT LEAKAGE OF WATER THROUGH THE JOINT SECTIONS OF A MANHOLE. THIS IS IN ADDITION TO THE NORMAL G-RING INSTALLATION.

LOTS 30, 31, 32, 82, 83, 84, 85, 86, 87, 88 ARE REVISED SO AREA OUTSIDE WETLANDS IS GREATER THAN HALF AN ACRE.

YOUR VISION ACHIEVED THROUGH OURS.

PRINCE GEORGE OFFICE
 4260 Crossings Blvd | Prince George, VA 22875
 TEL 804.541.6600 FAX 804.751.0798 www.timmons.com

NORTH CAROLINA | WEST VIRGINIA

DATE: 12/12/05
 DRAWN BY: K. HALPAUS
 DESIGNED BY: K. HALPAUS
 CHECKED BY: D. JOHNSON
 SCALE: 1"=50'

Site Development	Residential	Infrastructure	Technology
DATE	REVISION DESCRIPTION	DATE	REVISION DESCRIPTION
02-16-06	COUNTY COMMENTS	05-05-10	COUNTY COMMENTS
05-01-06	COUNTY COMMENTS	09-16-10	COUNTY COMMENTS
09-08-06	COUNTY COMMENTS	08-19-19	EXISTING WETLANDS UPDATE
02-01-08	COUNTY COMMENTS	10-09-19	COUNTY COMMENTS
09-30-09	COUNTY COMMENTS	1-17-20	REDUCE WETLAND IMPACTS
		08-18-21	COUNTY COMMENTS / FIELD CHANGES
		4-4-22	UTILITY AS-BUILT

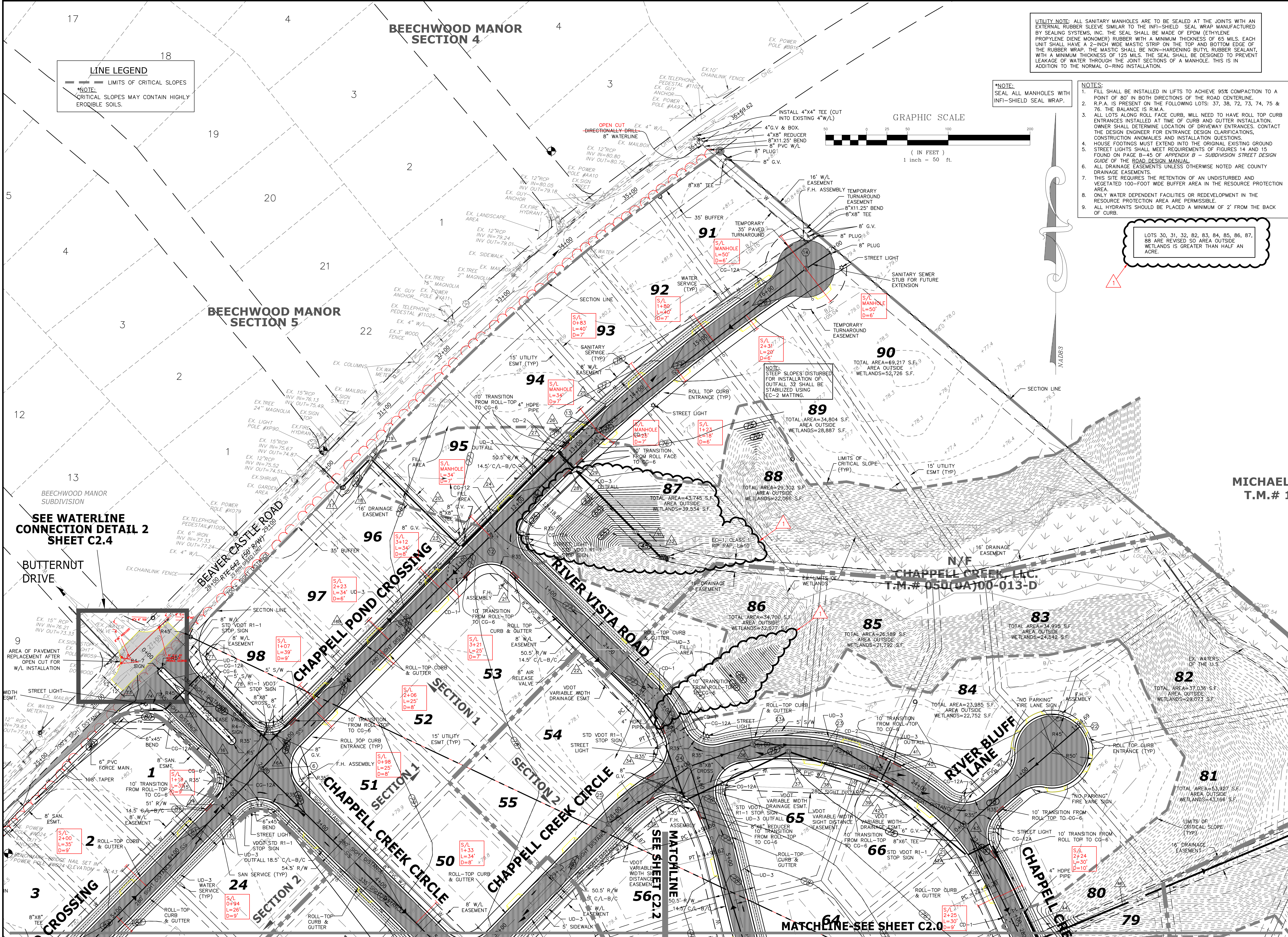
TIMMONS GROUP

CHAPPELL CREEK ON THE JAMES
 BLAND DISTRICT * PRINCE GEORGE COUNTY, VIRGINIA
 DEVELOPMENT PLAN - AS-BUILT

JOB NO. 22595
 SHEET NO. C2.0

These plans and associated documents are the exclusive property of TIMMONS GROUP and may not be reproduced in whole or in part and shall not be used for any purpose whatsoever, inclusive, but not limited to construction, bidding, and/or construction staking without the express written consent of TIMMONS GROUP.

MATCHLINE-SEE SHEET C2.2



TIMMONS GROUP

CHAPPELL CREEK ON THE JAMES
 BLAND DISTRICT * PRINCE GEORGE COUNTY, VIRGINIA
 DEVELOPMENT PLAN - AS-BUILT

YOUR VISION ACHIEVED THROUGH OURS.

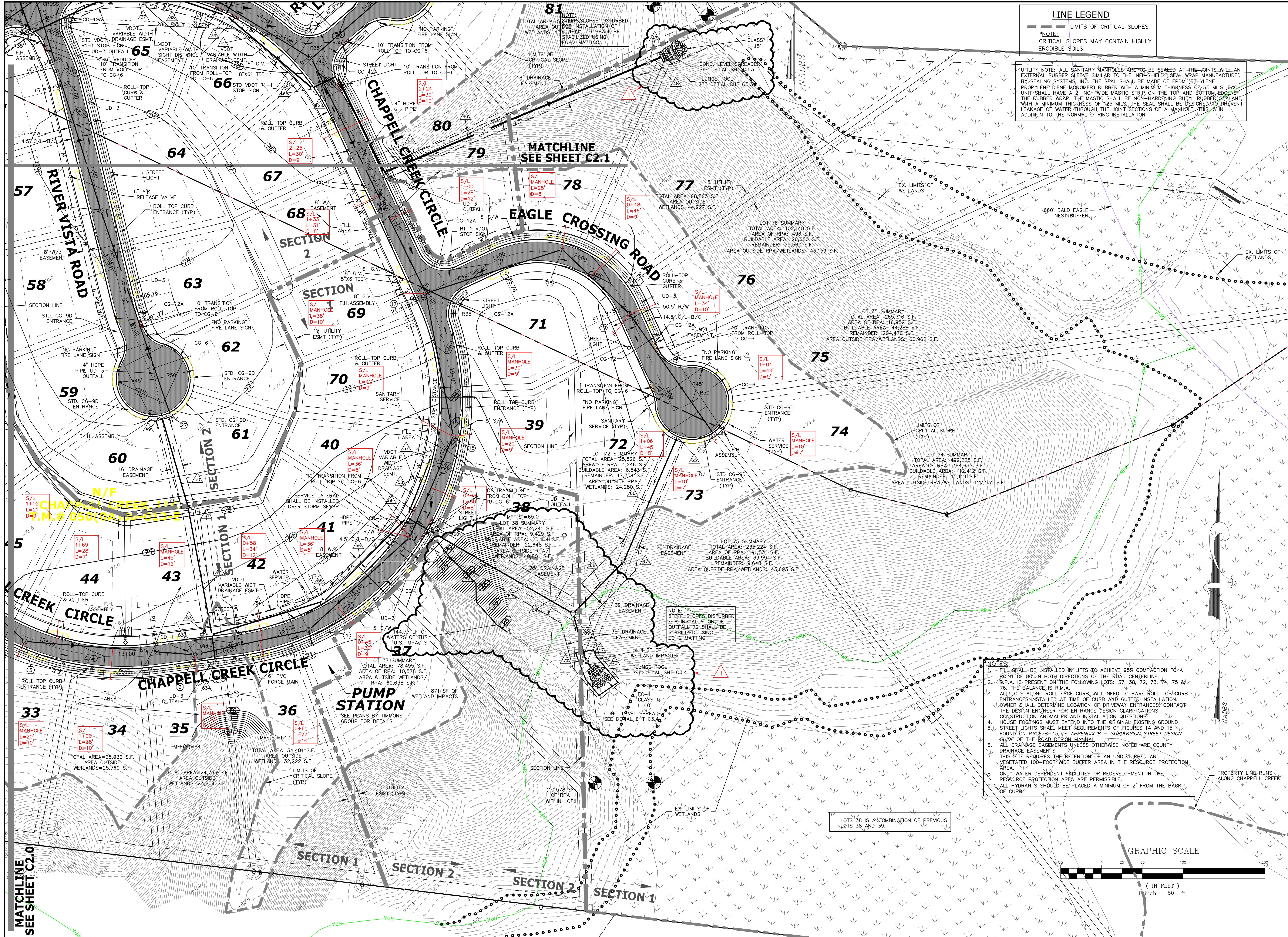
DATE	REVISION DESCRIPTION	DATE	REVISION DESCRIPTION
02-16-06	COUNTY COMMENTS	11-23-09	COUNTY COMMENTS
05-01-06	COUNTY COMMENTS	05-05-10	COUNTY COMMENTS
09-18-06	COUNTY COMMENTS	09-16-13	COUNTY COMMENTS
02-01-08	COUNTY COMMENTS	08-19-19	EXISTING WETLANDS UPDATE
09-30-09	COUNTY COMMENTS	10-09-19	COUNTY COMMENTS

DATE: 12/12/05
 DRAWN BY: K. HALPAUS
 DESIGNED BY: K. HALPAUS
 CHECKED BY: D. JOHNSON
 SCALE: 1"=50'

JOB NO. 22595
 SHEET NO. C2.1

VIRGINIA | NORTH CAROLINA | WEST VIRGINIA
 THIS DRAWING PREPARED AT THE
PRINCE GEORGE OFFICE
 4260 Crossings Blvd | Prince George, VA 23875
 TEL 804.541.6600 FAX 804.751.0798 www.timmons.com

1-17-20
 4-4-22
 COUNTY COMMENTS / FIELD CHANGES
 REDUCE WETLAND IMPACTS
 UTILITY AS-BUILT



TIMMONS GROUP

CHAPPELL CREEK ON THE JAMES
 BLAND DISTRICT * PRINCE GEORGE COUNTY, VIRGINIA
 DEVELOPMENT PLAN - AS-BUILT

VIRGINIA | NORTH CAROLINA | WEST VIRGINIA
 THIS DRAWING PREPARED AT THE
PRINCE GEORGE OFFICE
 4260 Crossings Blvd | Prince George, VA 23875
 TEL 804.541.6600 FAX 804.751.0798 www.timmons.com

YOUR VISION ACHIEVED THROUGH OURS.

DATE	REVISION DESCRIPTION	DATE	REVISION DESCRIPTION
12/12/05 <td></td> <td>11-23-09</td> <td>COUNTY COMMENTS</td>		11-23-09	COUNTY COMMENTS
		05-05-10	COUNTY COMMENTS
		09-16-13	COUNTY COMMENTS
		08-19-19	EXISTING WETLANDS UPDATE
		10-09-19	COUNTY COMMENTS
		11-17-20	REDUCE WETLAND IMPACTS
		08-18-21	COUNTY COMMENTS / FIELD CHANGES
		4-4-22	UTILITY AS-BUILT

Site Development Residential Infrastructure Technology

DATE: 12/12/05
 DRAWN BY: K. HALPAUS
 DESIGNED BY: K. HALPAUS
 CHECKED BY: D. JOHNSON
 SCALE: 1"=50'

JOB NO. 22595
 SHEET NO. C2.2

These plans and associated documents are the exclusive property of TIMMONS GROUP and may not be reproduced in whole or in part and shall not be used for any purpose whatsoever, inclusive, but not limited to construction, bidding, and/or construction staking without the express written consent of TIMMONS GROUP.

