

SURVEY NOTES:
 THIS AS-BUILT SURVEY WAS COMPLETED UNDER THE DIRECT AND RESPONSIBLE CHARGE OF GREG MCGLOTHLIN, FROM AN ACTUAL GROUND SURVEY MADE UNDER MY SUPERVISION, THAT THE ORIGINAL DATA WAS OBTAINED ON THE FOLLOWING DATES: MAY 13, 2022. THIS PLAT, MAP AND DIGITAL GEOSPATIAL DATA INCLUDING METADATA MEETS MINIMUM ACCURACY STANDARDS UNLESS OTHERWISE NOTED.

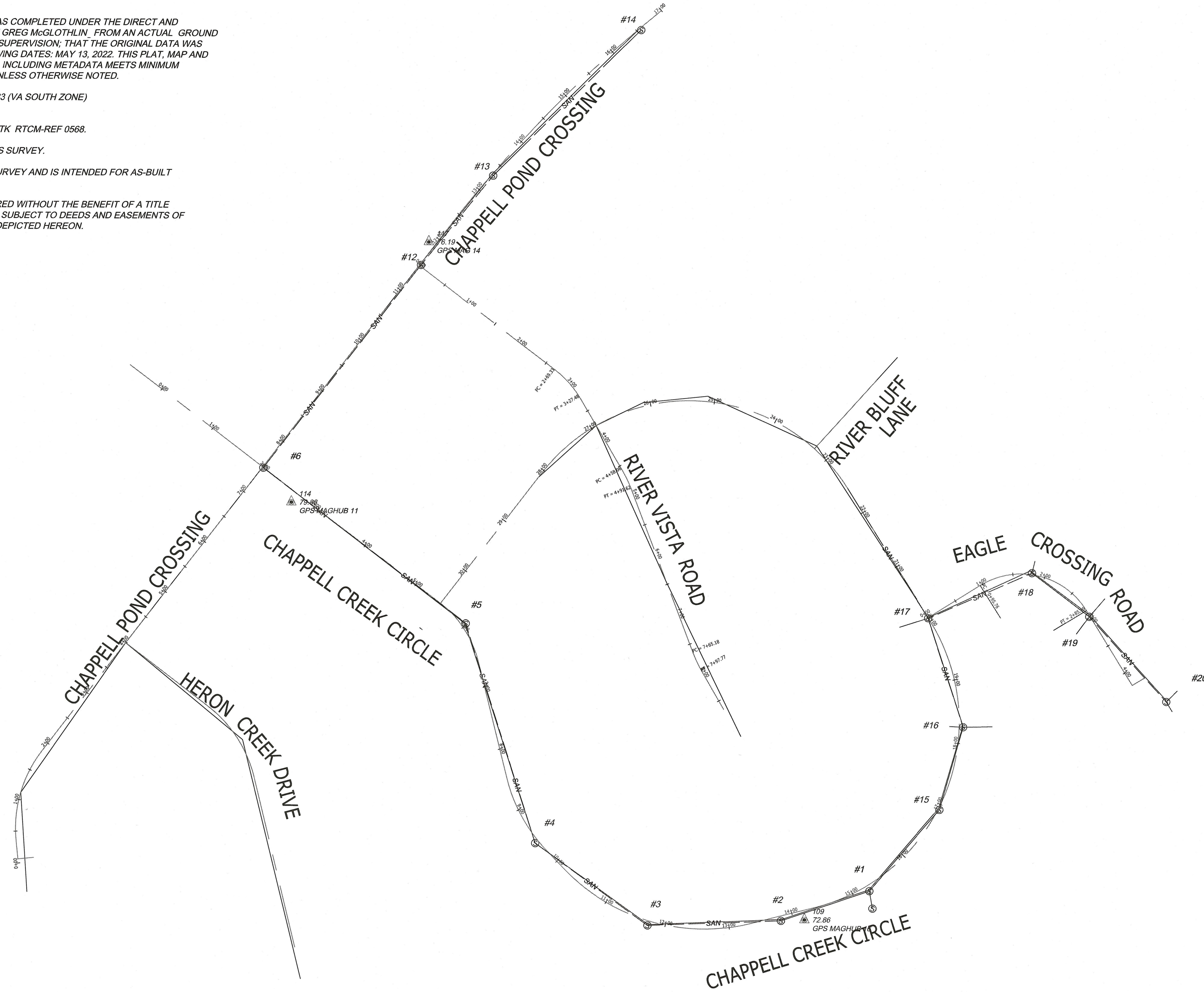
HORIZONTAL DATUM: NAD83 (VA SOUTH ZONE)
 VERTICAL DATUM: NAVD88

DATUM ESTABLISHED BY RTK RTCM-REF 0568.

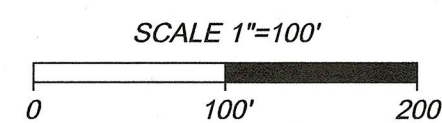
PAINTED NOT PART OF THIS SURVEY.

THIS IS NOT A FULL RUN SURVEY AND IS INTENDED FOR AS-BUILT PURPOSES ONLY.

THIS SURVEY WAS PREPARED WITHOUT THE BENEFIT OF A TITLE COMMITMENT AND MAY BE SUBJECT TO DEEDS AND EASEMENTS OF RECORD WHICH ARE NOT DEPICTED HEREON.



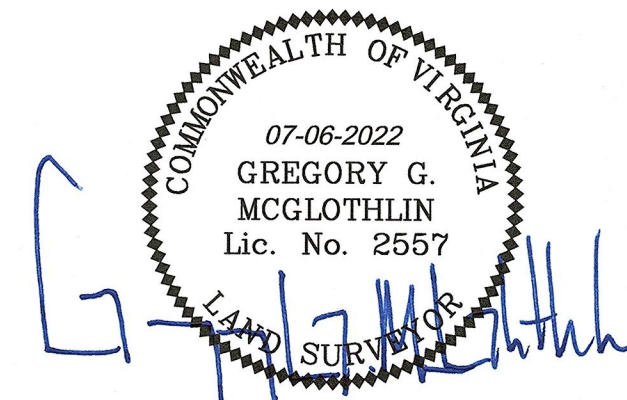
Legend
 Sanitary Manhole



CERTIFICATION:
 TIMMONS GROUP MEASURED THE AS-INSTALLED LOCATIONS AND ELEVATIONS OF THAT PORTION OF THE UTILITY IMPROVEMENTS WHICH CAN BE MEASURED FROM THE SURFACE AND THAT ANY DEVIATIONS FROM THE MEASUREMENTS IDENTIFIED ON THE APPROVED SITE DEVELOPMENT PLANS HAVE BEEN INDICATED ON THE FOLLOWING SHEETS ACCURATELY AND IN THE MANNER WHICH DISTINGUISHES THIS AS-BUILT INFORMATION FROM THE AS-DESIGNED INFORMATION AND THAT ANY ADDITIONAL INFORMATION FURNISHED BY THE COUNTY HAS BEEN ACCURATELY TRANSCRIBED ONTO THESE CONSTRUCTION RECORD DRAWINGS.

NAME: GREGORY G. MCGLOTHLIN
 TITLE: LAND SURVEYOR
 LICENSE TYPE AND NUMBER: 2557

SIGNATURE: G. G. McGlothlin



**UPDATED AS-BUILT PLAN AND PROFILE SHEET
 FOR CHAPPEL CREEK**

BLAND DISTRICT	PRINCE GEORGE COUTY
Date: MAY 20, 2022	Scale: 1"=10'
Sheet 1 of 2	J.N.: 43671
Drawn by: C.RODGERS	Checked by:
Revised:	

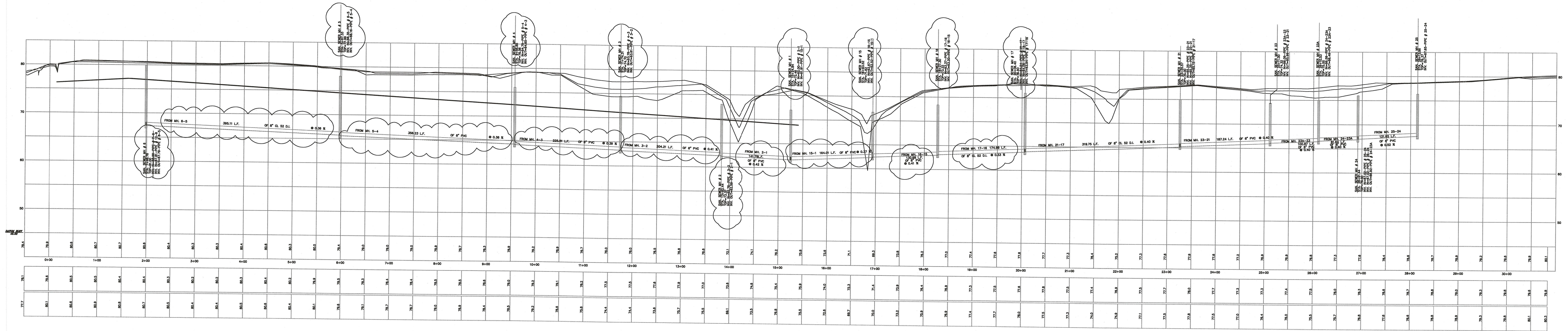
Y:\903\43671-ChappellCreekRods\DWG\43671-903V.XP\SAN-PROFILES.dwg | Plotted on 7/6/2022 2:43 PM | by Clifton Rodgers

THIS DRAWING PREPARED AT THE
TIMMONS GROUP
 4701 Owens Way, Suite 900 | Prince George, VA 23875
 TEL: 804.541.0600 FAX: 804.651.1511 www.timmons.com

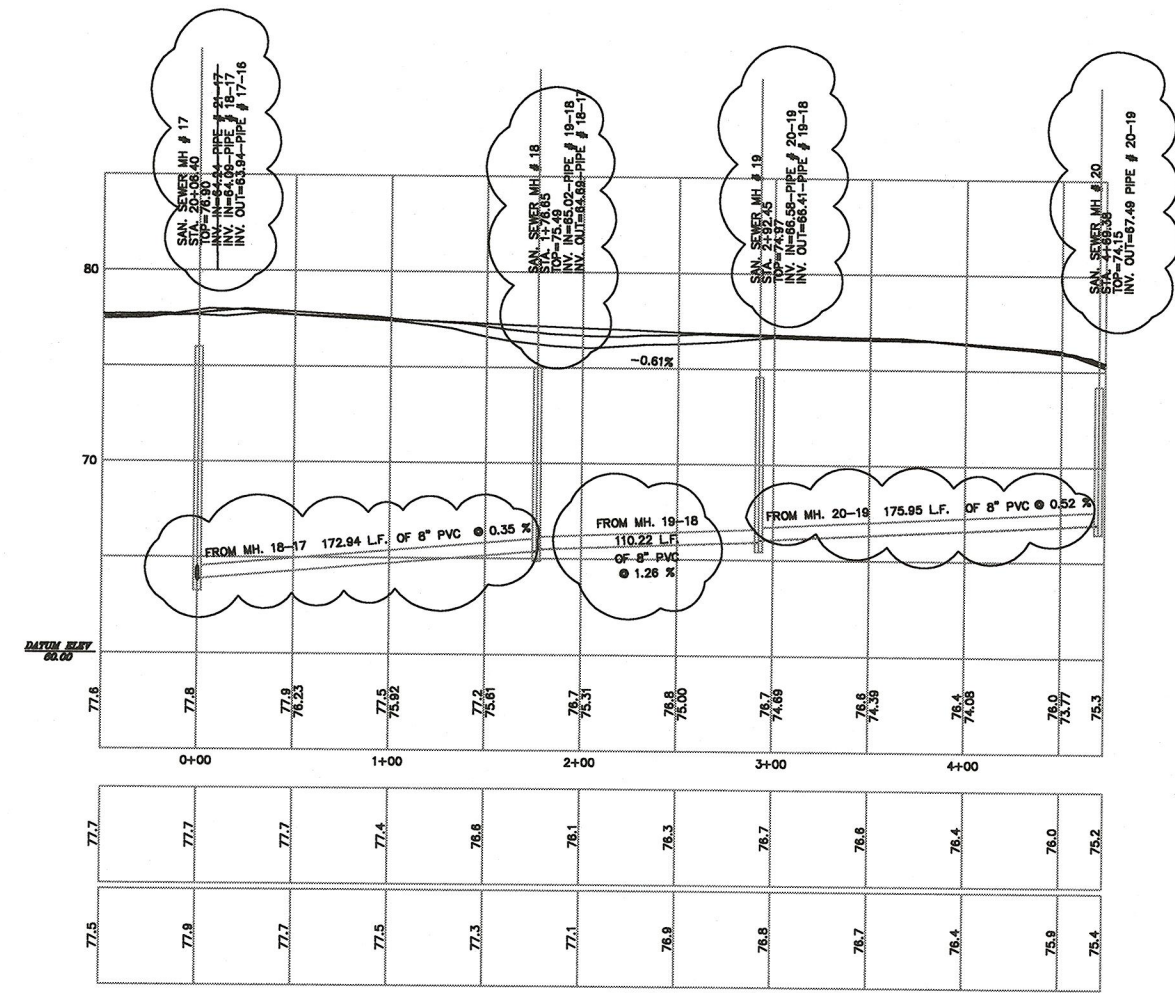
YOUR VISION ACHIEVED THROUGH OURS.



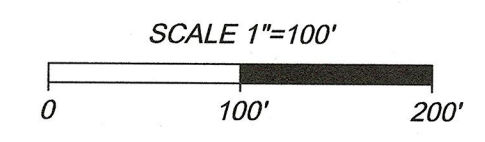
CHAPPELL CREEK CIRCLE



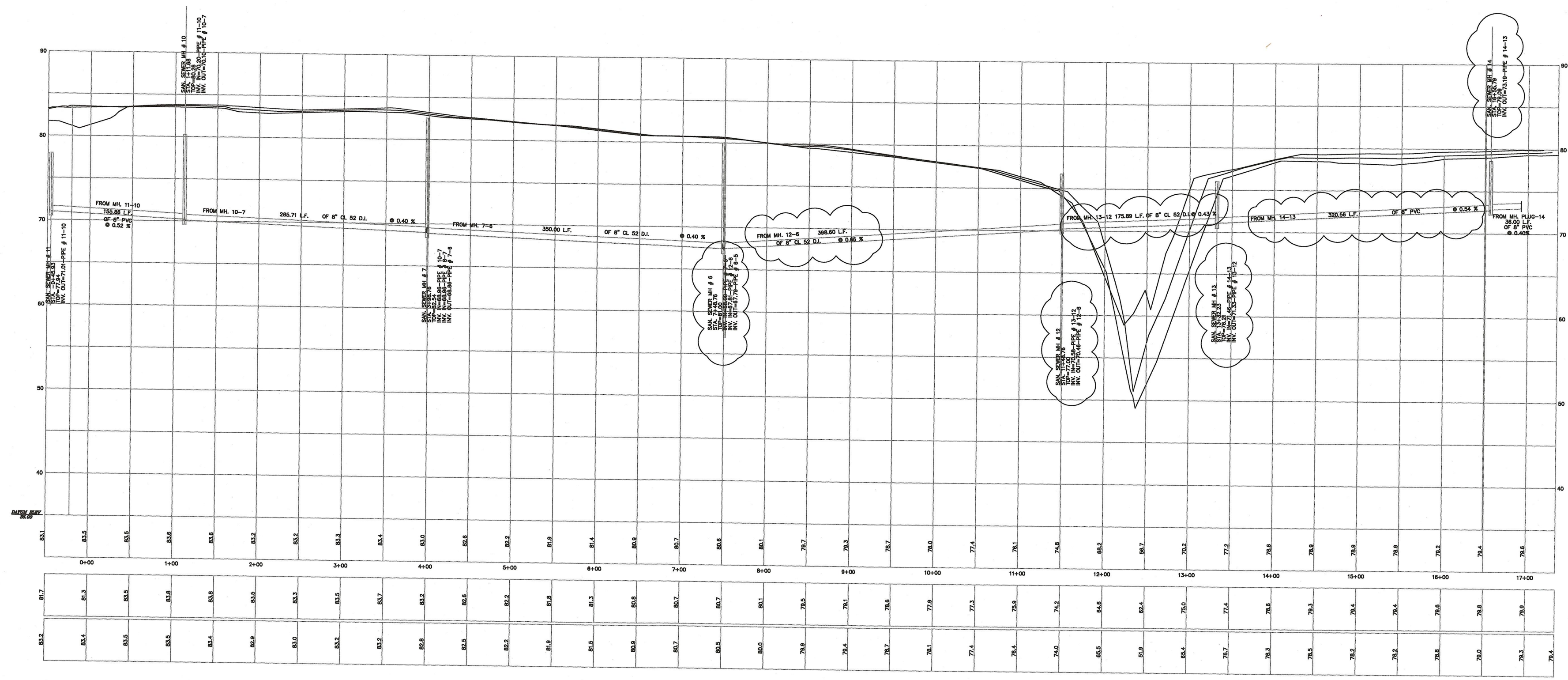
EAGLE CROSSING ROAD



COMMONWEALTH OF VIRGINIA
 07-06-2022
 GREGORY G. MCGLOTHLIN
 Lic. No. 2557



CHAPPELL POND CROSSING



UPDATED AS-BUILT PLAN AND PROFILE SHEET
 FOR CHAPPELL CREEK

BLAND DISTRICT	PRINCE GEORGE COUTY
Date: MAY 20, 2022	Scale: 1"=10'
Sheet 2 of 2	J.N.: 43671
Drawn by: C.RODGERS	Checked by:
Revised:	

Y:\90343671-ChappellCreekRoads\DWG\43671-903V-XPSAN-PROFILES.dwg | Plotted on 7/6/2022 2:43 PM | by Clifton Rodgers

THIS DRAWING PREPARED AT THE
TLC-CITIES OFFICE
 4701 Owens Way, Suite 900 | Prince George, VA 23875
 TEL 804-541-6800 FAX 804-458-1511 www.timmons.com

YOUR VISION ACHIEVED THROUGH OURS.

TIMMONS GROUP